



LEDUC
COUNTY

Leduc County

2022 Community Profile

Table of Contents

- 3** **About Leduc County**
- 4** **Just the facts**
- 5** **Leduc County in numbers**
- 6** **Competitive strengths**
- 7** **Location advantage**
- 8** **Labour force and industry base**
- 9** **Business environment**
- 10** **Key sectors: Agriculture**
- 11** **Key sectors: Food processing**
- 12** **Key sectors: Manufacturing**
- 13** **Key sectors: Energy services**
- 14** **Key sectors: Transportation and logistics**
- 15** **Make your next move, choose Leduc County**

About Leduc County

Leduc County offers an economic advantage. Ideally located within major air, rail and road networks, the County is home to the Nisku Business Park, Edmonton International Airport and Capital Power's Genesee Generating Station. Adjacent municipalities include the cities of Edmonton, Beaumont and Leduc, the towns of Calmar, Devon and Thorsby and the Village of Warburg. These employment hubs provide thousands of jobs to people in the region.

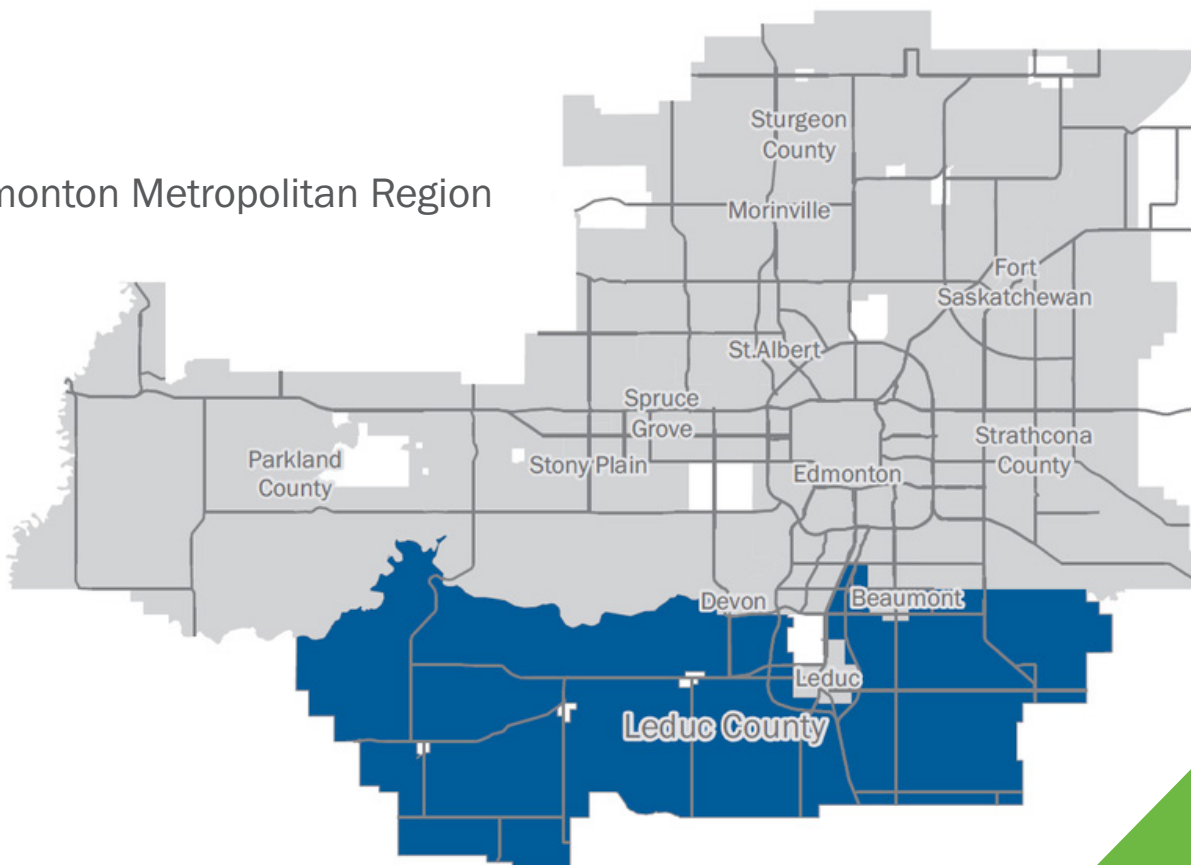
Growth and diversification of investment is crucial to future success — and our economic development program provides support and resources to all businesses who call Leduc County home.

Leduc County works to grow the economy through investment attraction, business development, retention and expansion.

“For businesses and residents seeking a place to thrive, Leduc County offers a stable local economy, diverse business opportunities, citizen-focused leadership and peaceful rural living. Our informed and measured approach to growth has made us a leading choice for global industry.”

Tanni Doblanko
Mayor, Leduc County

Edmonton Metropolitan Region



Just the facts

Ready for new investment

Leduc County aims to foster an environment that promotes innovation, job creation, new investment, and growth of the local economy. The County is ideally positioned for businesses and entrepreneurs, with strong research and development support, access to an educated workforce and access to a transportation hub.

A natural hub for transportation and warehousing

Leduc County is in the middle of Western Canada on major transportation corridors running north-south and east-west, making it a natural hub for trucking and warehousing. A vehicle that leaves Leduc County can access all major cities in Western Canada — including those in the north — within 24 hours.

Regional access to workforce

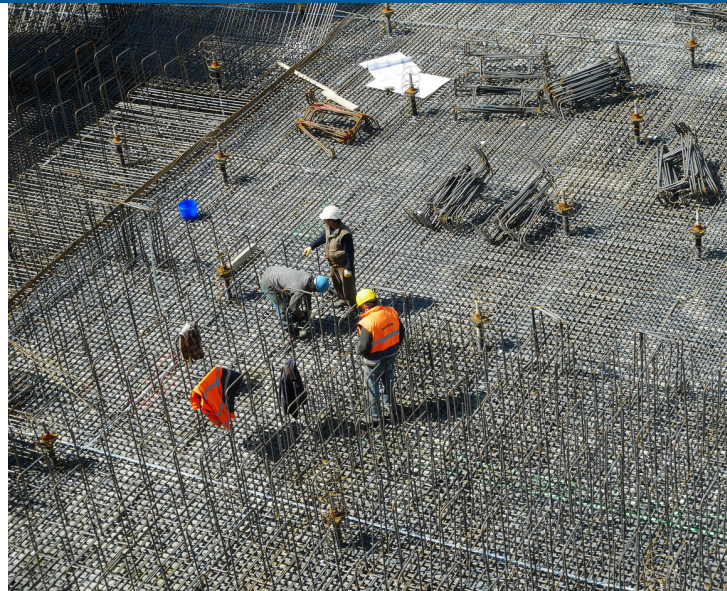
Leduc County has a population of more than 14,000¹, and access to 1.4 million² people in the Edmonton Metropolitan Region. In 2018 there were roughly 70,000 students enrolled in post-secondary institutions in the Edmonton Metropolitan Region, including the University of Alberta, MacEwan University, the Northern Alberta Institute of Technology (NAIT) and more.

The right choice for investors

Leduc County is home to a vibrant and diverse business community that includes agriculture, food processing, manufacturing, transportation and logistics, and energy services.

1 - Statistics Canada. Table 98-10-0002-01 Population and dwelling counts: Canada and census subdivisions (municipalities)

2 - Statistics Canada. Table 98-10-0014-01 Population and dwelling counts: Census metropolitan areas, tracted census agglomerations and census tracts



Leduc County in numbers



Leduc County has a population of

14,416

Source: Statistics Canada, 2021 Census of Population



Leduc County is a growing community

Source: Manifold Data Mining 2019



Median age (in years)

42.3

Source: Statistics Canada, 2016 Census of Population



\$103,646

Median household income

Source: Statistics Canada, 2016 Census of Population



Workforce participation rate

73.4%

Source: Government of Alberta, Regional Dashboard, Leduc County



Regional unemployment rate

7.6%

Source: Government of Alberta, Regional Dashboard, Leduc County



\$580,340

Average value of residential dwellings

Source: Statistics Canada, 2016 Census of Population



41%

of people have a post-secondary diploma/degree

Source: Government of Alberta, Regional Dashboard, Leduc County



833

Businesses classified by industry in Leduc County

Source: Government of Alberta, Regional Dashboard, Leduc County, number of businesses, 2021



15.7%

of labour force is employed in the agricultural sector

Source: Government of Alberta, Regional Dashboard, Leduc County

18 companies

employ more than 200 people

Source: Government of Alberta, Regional Dashboard, Leduc County, number of businesses, by size, 2021

Competitive strengths

Leduc County is a prime location for business start-up and investment, thanks to a streamlined permitting and inspections process, competitive tax rates, availability of skilled workers and connections to global transportation networks.

Home to the Nisku Business Park

Together the Nisku Business Park and Leduc Business Park form the second-largest energy manufacturing industrial park in North America and the largest in Canada. The Leduc Business Park is conveniently situated in the City of Leduc adjacent to the Nisku Business Park.

The two parks are contiguous, attracting a diverse customer base including manufacturing, energy services, transportation and logistics, and agri-food which benefit from their proximity to Edmonton International Airport. Both parks have easy access to the Queen Elizabeth II Highway, Alberta's major north-south artery.

Edmonton International Airport

Leduc County is home to Edmonton International Airport (EIA), one of only three cargo airports in Canada with a 24-hour operational capacity. Currently, it is home to eight integrated couriers/freight carriers, three independent cargo handlers, more than 40 freight forwarders and customs brokers and six cargo-handling terminals.

Notable investment activity

\$120-million Amazon Fulfilment Centre

Leduc County is home to the second Amazon Fulfilment Centre in Alberta. The \$120 million investment was approved in 2018 for a one-million-square-foot fulfillment centre which employs more than 600 people. The Amazon facility is the focal point of a new transportation and logistics hub in the County.



Aurora Sky

Aurora Sky built a 800,000 square foot high-technology greenhouse facility. Completed in 2019, Aurora Sky is located next to Edmonton International Airport, and it is one of the largest marijuana production facilities in the world.



Capital Power Genesee Generating Station

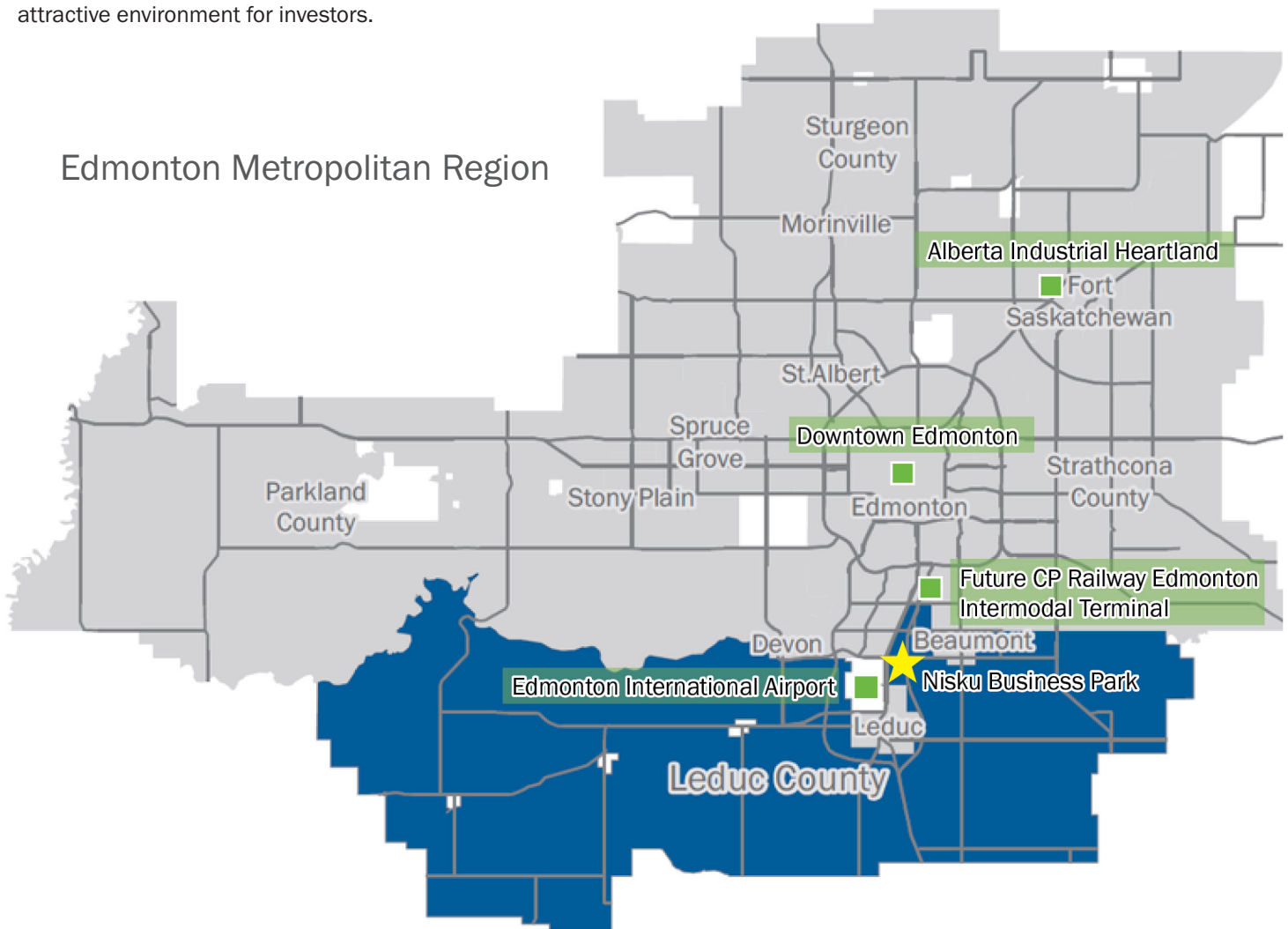
Capital Power is building the world's largest commercial-scale production facility of carbon nanotubes at the Genesee Generating Station. The project will initially produce 500 tonnes of carbon nanotubes per year and, once completed, will be capable of producing up to 7,500 tonnes annually.



Location advantage

Superior business locations and transportation infrastructure

Leduc County is located just south of the City of Edmonton and is a crucial transportation hub in the region. Home to Edmonton International Airport (EIA), the County has high-quality transportation infrastructure, access to educational and research institutions, lower land cost and the lowest taxes in the region. These are just a few of the factors that makes Leduc County an attractive environment for investors.



Access key transportation hubs in under an hour's drive

- ▶ Nisku Business Park to EIA: three kilometres (five minute drive time)
- ▶ Nisku Business Park to future CP Railway Intermodal Terminal: 13 kilometres (11 minute drive time)
- ▶ Nisku Business Park to downtown Edmonton: 29 kilometres (28 minute drive time)
- ▶ Nisku Business Park to Alberta Industrial Heartland: 63 kilometres (40 minute drive time)

Labour force and industry base

Leduc County's skilled labour force

Leduc County has skilled workers that are ready to support new investment. The County has a robust labour force across several sectors including agriculture and forestry, construction, mining, and oil and gas.

When businesses locate or start up within Leduc County they can be confident they have access to a large skilled workforce. Sixteen per cent of the County's population has an apprenticeship or trades certificate or diploma and 24 per cent of the broader Edmonton Metropolitan Region has a university certificate or above¹.

Source: Statistics Canada, 2016 Census of Population



Total Edmonton Metropolitan Region Labour Force

844,000+

Source: Statistics Canada, 2016 Census of Population



Total Leduc County labour force

7,590

Source: Government of Alberta, Regional Dashboard, Leduc County

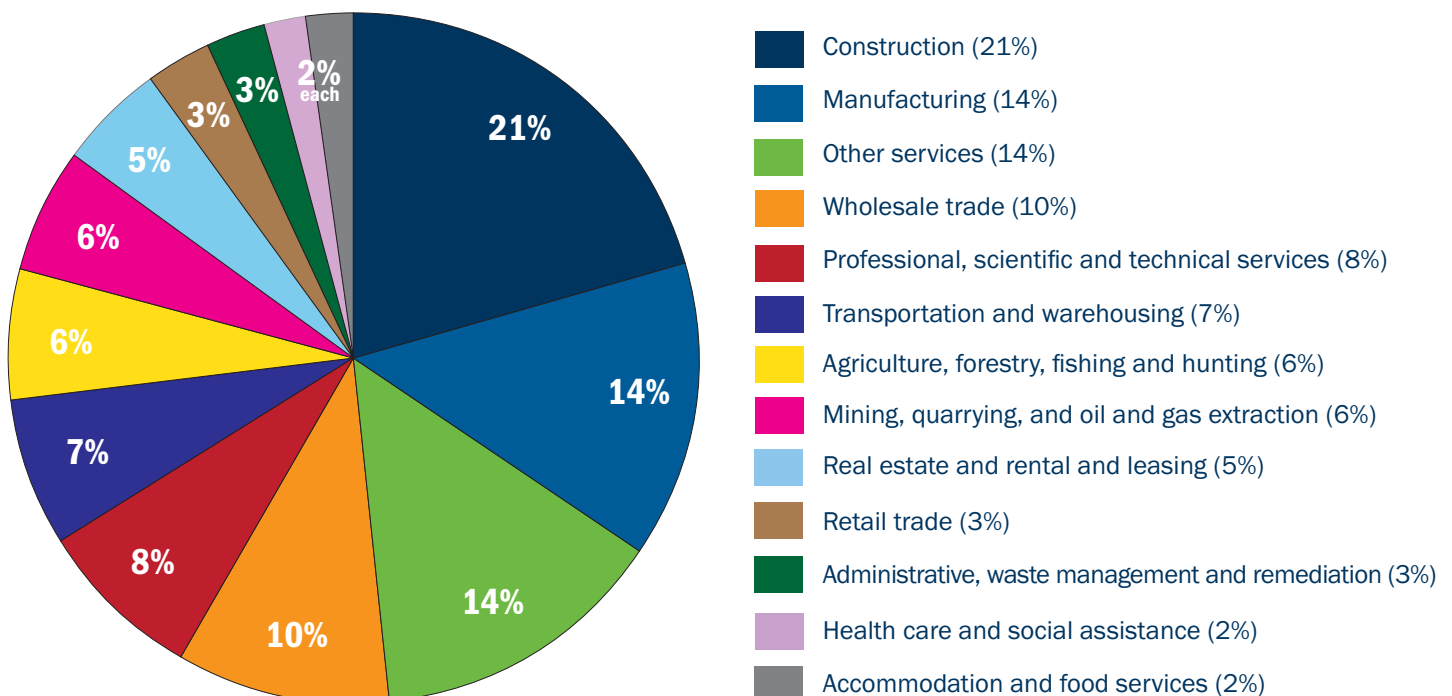
A diverse economy and industry base

Leduc County supports a robust and diverse local economy with more than 800 businesses. We offer an established business community that can support any new business investment, regardless of their industry sector focus.

Source: Government of Alberta, Regional Dashboard, Leduc County

Businesses in Leduc County

Percentage of total by industry (2021)



*Percentages rounded to the nearest whole number

Source: Government of Alberta, Regional Dashboard, Leduc County

Business environment

Leduc County has the lowest tax rates in the Edmonton Metropolitan Region

Leduc County offers a competitive tax environment. The 2021 non-residential mill rate in Leduc County was 10.23 compared to the City of Edmonton at 24.14.

Municipality	2020 Tax MILL RATE	2021 Tax MILL RATE	2021 tax per \$1 million ASSESSMENT	Mill rate CHANGE
Leduc County	9.98	10.23	\$10,230	2.44%
Town of Stony Plain	11.05	11.62	\$11,620	4.91%
Parkland County	11.44	11.45	\$11,450	0.09%
City of Leduc	11.91	12.65	\$12,650	5.85%
City of Spruce Grove	12.58	13.37	\$13,370	5.91%
Strathcona County	13.01	13.78	\$13,780	5.59%
City of Beaumont	13.19	13.76	\$13,760	4.32%
City of Fort Saskatchewan	13.57	14.07	\$14,070	3.55%
Sturgeon County	14.25	14.25	\$14,250	0%
City of St. Albert	14.66	15.54	\$15,540	5.66%
City of Edmonton	22.22	24.14	\$24,140	7.95%

North Nisku

- ▶ Non-traditional key industry sectors like food processing, manufacturing, transportation and logistics and energy services are steadily moving into Nisku Business Park.
- ▶ The park has nearly 20,000 acres of businesses in these key industry sectors.
- ▶ In 2020, North Nisku — driven primarily by these sectors — grew by 52 per cent.
- ▶ North Nisku is anchored by warehousing, logistics and commercial development.
- ▶ In addition to existing vacancies, more than 2,100 acres are available for development immediately or in the short-term, and another 2,500+ acres will be available to develop in the long-term.
- ▶ Investments in infrastructure, like the Nisku Spine Road, will unlock access to roughly 20,000 acres of land.



Key sectors in Leduc County

Agriculture

Leduc County's agriculture sector is resilient and innovative, employing more than 600 people¹ and generating \$198 million² in farm receipts.



With ample farmland, state-of-the-art research and development facilities, and a rising advanced technology sector, Leduc County hosts the entire sector value chain, including high-quality primary production and a cluster of processing plants.

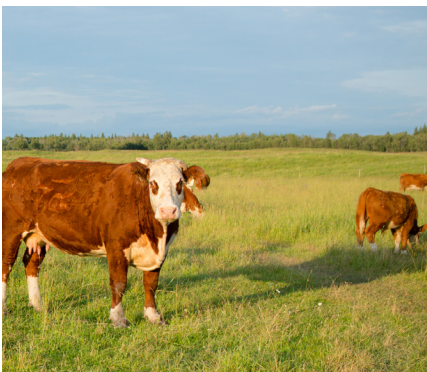


Leduc County is well-suited for grains, oilseeds, pulses, cannabis, hemp, and livestock production.



555,940 acres of farmland supporting more than 1,088 farms in Leduc County.*

Source: Statistics Canada 2016 Census of Agriculture
**Note, area and farms includes Christmas tree area.*



Leduc County has abundant access to high quality agriculture land, ample livestock supply and active collaborations between industry and academia.

Major field crops including canola, wheat, barley, peas and alfalfa are readily available for production of alternative proteins. Leaders in the agriculture sector are innovative and poised to support the growth of new markets such as the hemp and cannabis sector.

¹ Statistics Canada. Table 32-10-0439-01 Paid labour, Census of Agriculture, 2011 and 2016

² Statistics Canada. Table 32-10-0436-01 Farms classified by total gross farm receipts, Census of Agriculture, 2011 and 2016

Key sectors in Leduc County

Food processing

Leduc County is home to a rapidly growing food processing sector, backed by business-friendly policies, high-quality facilities, and excellent access to major transportation arterials.



High-quality sites within the Nisku Business Park have advantageous tax rates, access to transportation routes and modern amenities.



Businesses can easily access the innovation ecosystem through the Government of Alberta's Food Processing and Development Centre, University of Alberta Agrifood Discovery Place, and the NAIT Centre for Culinary Innovation.



Access specialized talent from Alberta's largest research institution – the University of Alberta – and Canada's largest provider of apprenticeship training – the Northern Alberta Institute of Technology.



Leduc County is recognized as a location of growth for food and beverage manufacturing businesses to locate as there is ample raw materials, access to transportation networks, and connection to research and development facilities.

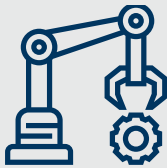
Leduc County has a robust transportation capacity through air, road, and rail, and has supportive policies and trade agreements to access global markets.



Key sectors in Leduc County

Manufacturing

Leduc County is a leader in a wide range of advanced manufacturing. A diverse mix of manufacturing companies call the Nisku Business Park home. In addition to hosting the traditional oil and gas service industry, the County's fabrication shops are building some of the biggest infrastructure used in the petro-chemical industry.



155

Number of manufacturing businesses in Leduc County.

Source: Statistics Canada Business Counts, June 2020



Leduc County has a strong concentration of fabricated metal product manufacturing and machinery manufacturing.



The Northern Alberta Institute of Technology (NAIT) is one of the largest apprenticeship trainers in Canada, offering 28 registered trades programs.

Source: NAIT, 2021



The County has growth opportunities focused on advanced manufacturing in aerospace and clean technologies, with easy access to Edmonton International Airport and the manufacturing clusters in Nisku Business Park. Opportunities for the manufacturing sector are also centered around metal and machinery and petrochemicals, bio-industrial manufacturing, nanotechnology and food processing.



Key sectors in Leduc County

Energy services

Leduc County is a resource-rich region, with access to a wide number of resources and a well-established oil and gas cluster. Renewable energy, clean energy and alternative energy are all part of the mix that will help propel the region forward.



Leduc County is poised to help build the infrastructure needed to support Canada's hydrogen hub.



The largest petroleum manufacturing industrial park in Canada, and the 2nd largest in North America, is located in Leduc County.



The Edmonton Metropolitan Region has a labour force of roughly **9,573** people working in the utilities and energy-related fields.

Source: Environics Analytics, 2019



By 2023, the Genesee Generating Station will be converted from coal power to natural gas. In addition, Capital Power is proceeding with plans to build the world's largest commercial-scale production facility of carbon nanotubes at the Genesee Generating Station. GC3 will utilize emissions from the facility alongside C2CNT technology, a carbon conversion solution that transforms emissions into highly valuable carbon nanotubes.



Key sectors in Leduc County

Transportation and logistics

Leduc County is ideally located, having access to major highways, an international airport and next to Canada's fifth largest city, the City of Edmonton.



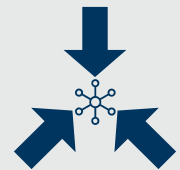
12,330

businesses in the transportation, warehousing and logistics sector registered in the Edmonton Metropolitan Region.

Source: Statistics Canada Business Counts



Leduc County has high concentrations of businesses in specialized freight trucking, support activities for air transportation and scheduled air transportation.



Home to Port Alberta, the regional inland port where air, rail, pipelines and roadways converge to create a regional manufacturing, cargo and logistics hub.

Source: Port Alberta website



Leduc County has direct connections to multimodal transportation, including CN and CP Rail, providing access to markets on both of Canada's coasts through the US Midwest and Gulf Coast highways for importing and exporting goods, and via Edmonton International Airport for the fast shipping of inputs, easy access to potential investors, and new export opportunities.



Make your next move...

Choose Leduc County

If you are looking to either locate, relocate, or start up a business in Leduc County, we want to help. We can connect you with a number of resources and programs that will provide the competitive advantage you need to succeed. We aim to support our business community by providing value-added services and responsible fiscal management, because when local businesses succeed, we all win.

Competitive tax system

Doing business in Leduc County is the best bang for your buck. Some financial advantages include the following:

- ▶ the lowest municipal mill rate in the Edmonton Metropolitan Region
- ▶ no provincial sales tax
- ▶ no provincial capital tax
- ▶ no provincial payroll taxes

Location

Leduc County has several large parcels of service land, move-in ready spaces and opportunities to build to suit. We're committed to making the development process as easy as possible – our streamlined permitting and inspections process makes it faster and easier for you to go from business idea to implementation.

Easy market access

Located in a transportation hub, Leduc County is an attractive place for the distribution of goods and services for a variety of industries. Easy access via air, rail or truck, our prime location gives your business cargo access to regional, interprovincial and global markets.

Global talent

With seven post-secondary institutions, access to 1.4 million people in the Edmonton Metropolitan Region and partnerships between all levels of government to fund innovation and growth, there is no shortage of skilled, qualified workers in a diverse talent pool.

Connect with Leduc County's Economic Development Coordinator for detailed information on our streamlined development and permitting process or connection to local networks and resources.

Contact:

Bryanna Kumpula-Yung
Economic Development Coordinator

Email: bryanna@leduc-county.com

Phone: 780-979-6195

101-1101 5 St. Nisku, AB T9E 2X3

www.leduc-county.com



101-1101 5 St., Nisku, AB T9E 2X3
phone: 780-955-3555 **fax:** 780-955-3444
leduc-county.com

